

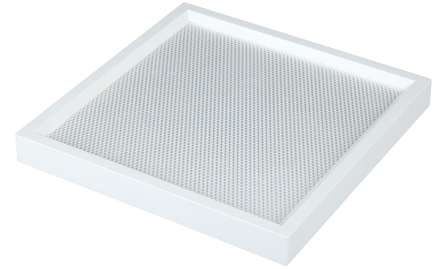


GP-SMS Mini Square Down Light

Type: _____
 Project: _____
 Catalog#: _____

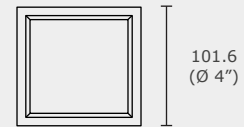
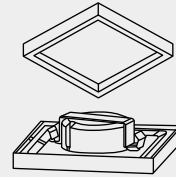
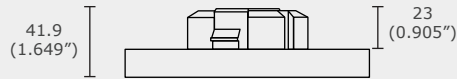
Main Features

- Modern and sleek design, high transmittance lens
- Smooth, low glare light pattern, anti-glare design
- Over 50,000+ hours of life, wet location and IC Rated
- Dimming: 10% - 100%



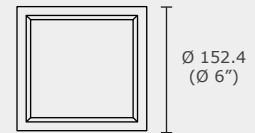
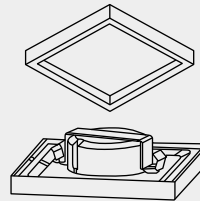
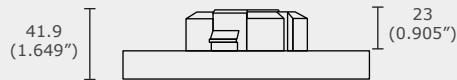
Technical Information

GP-SMS



5 inch LED Down Light

7 inch LED Down Light



*All units in mm

Specification Features

Model	GP-04-SMS	GP-06-SMS
Lumen Output	715 lm	1000 lm
Power Consumption	10.5 W	14.2 W
Input Voltage	120V AC	120V AC
Colour Temperature (CCT)	3000K, 3500K, 4000K	3000K, 3500K, 4000K
PPF	> 0.9	> 0.9
Operating Temperature	-20°C ~ 40°C	-20°C ~ 40°C
Dimensions	101.6 x 101.6 x 41.9 mm	152.4 x 152.4 x 41.9 mm
Beam Angle	90° ± 7°	90° ± 7°
Certification	cULus	cULus
Warranty	5 Years	5 Years

Order form

Series		Model		Wattage		Voltage				Finish		CRI			
GP	GP	SMS	SMS	04	4"	30	3000K	40	4000K	WH	White	BK	Black	80	Ra 80
				06	6"	35	3500K			AL	Aluminum			90	Ra 90