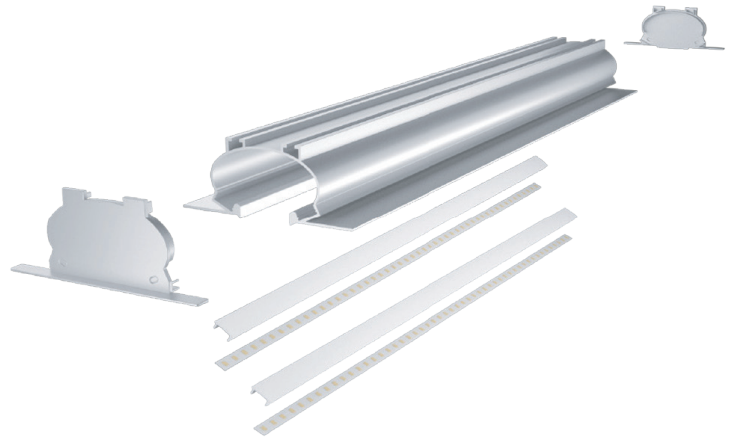
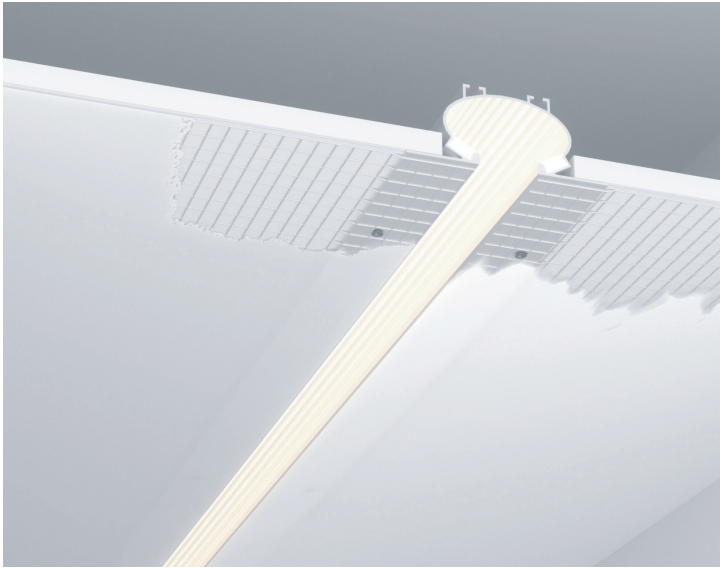


TYPE: PROJECT: CATALOG#: CEILING DECORATIVE LED PROFILE

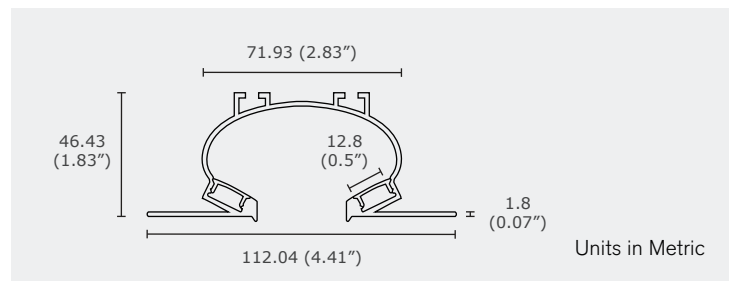


Product Features

GIT-LD1146 is a ceiling decorative profile that comes with end caps to attach onto the ends of the profile. The diffuser cover is suitable for commercial and indoor lighting. Mounting clips are available and optional for a quick and simple installation.

5 YEARS LIMITED WARRANTY INCLUDED

Technical Drawing



Product Specifications

Model	Power	Input Voltage	LED Strip Width	Length	Dimensions	Application
GIT-LD1146	28.8W/m	24V DC	2x10 mm	500 - 3000 mm	112 x 72 mm	Commercial lighting, Indoor lighting

Order Form

GIT		LD1146									
Series	Model	3	4	5	6	7	8	9			
3.WATTAGE		4.VOLTAGE		5.LENGTH		6.COVER		7.HOUSING		8.FINISH	
28	28.8W/m	A	24V DC	500 - 3000 mm		CL	Clear	FR	Frosted	SV	Silver
						ML	Milky	BK	Black	WH	White
										BK	Black
										PT	Painted
										9.ACCESSORIES	
										EC1	End Cap
										EC2	End Cap with a hole