

## Product Features

This RECESSED GIMBAL with multi-directional adjustable swivel produces a high light output with minimal glare as a result of its regressed light source. Ideal for sloped ceilings, wall washing, highlighting artwork, task or general lighting. 360° rotation and 30° tilt angle.



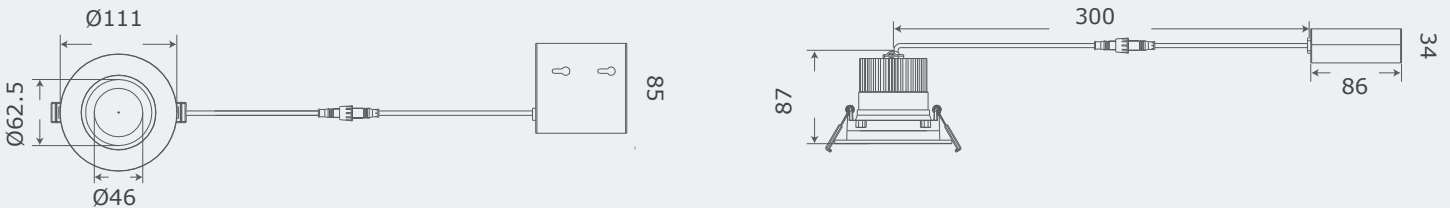
IP65 IESNA LM-80 IESNA LM-79 Intertek ENERGY STAR 5 YEARS LIMITED WARRANTY INCLUDED

## Product Specifications

Model	GP-RG35-R-CCT	GP-RG35-R-WD
Lumen Output	950 lm	950 lm
Power Consumption (W)	12 W	12 W
Input Voltage	120-277V AC	120-277V AC
Colour Temperature (CCT)	2700K, 3000K, 3500K, 4000K, 5000K	Warm Dimming
CRI	Ra 90	Ra 90
Dimensions (mm)	Ø111 x 87 mm	Ø111 x 87 mm
Beam Angle	38°	38°
IP Rating	IP65	IP65

## Technical Drawing

CUTOUT: Ø90



## Order Form

GP	RG35	3	4	5	6	7	8	9
Series	Model							
<b>3. SIZE</b>	<b>4. WATTAGE</b>	<b>5. VOLTAGE</b>	<b>6. CCT</b>	<b>7. DIMMING</b>	<b>8. HOUSING</b>	<b>9. CRI</b>		
R 3.5" Round	12 12 W	A 120-277V AC	CCT Colour Adjustable (2700K, 3000K, 3500K, 4000K, 5000K) WD Warm Dimming	DL DALI DM 0-10V TR TRIAC	W White B Black	90 Ra90		

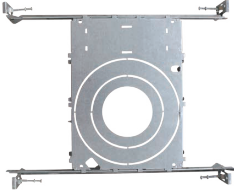
TYPE:

PROJECT:

CATALOG#:

LED Regressed Gimbal Recessed Downlight

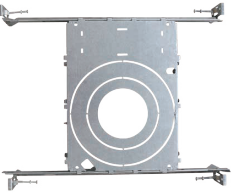
## New Construction Mounting Plate



### MP-UNV-23354

The MP-UNV-23354 is a 2<sup>3</sup>/<sub>8</sub>"/3<sup>5</sup>/<sub>8</sub>" new construction pre-mounting plate with hanger bars,

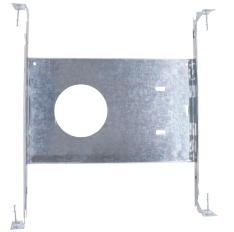
opening Ø2-1/8"(54mm), Ø2-7/8"(72mm), Ø3-3/4"(95mm), Ø5-1/4"(132mm)



### MP-UNV-346

The MP-UNV-346 is a 3<sup>1</sup>/<sub>4</sub>"/6" new construction pre-mounting plate with hanger bars,

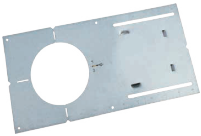
opening Ø3"(75mm), Ø4-3/8"(110mm), Ø6-1/4"(160mm)



### MP-95

The MP-95 is a 3 3/4" new construction pre-mounting plate with hanger bars,

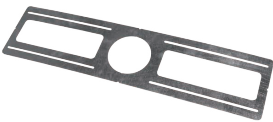
opening Ø3 3/4"(95mm).



### MP4

The MP4 new construction pre-mounting plate

opening Ø4-1/4"(108mm)



### MP4-1

The MP4-1 new construction pre-mounting plate

opening Ø4-1/4"(108mm)

TYPE: \_\_\_\_\_ PROJECT: \_\_\_\_\_ CATALOG#: \_\_\_\_\_ LED Regressed Gimbal Recessed Downlight

## Product Features

This RECESSED GIMBAL with multi-directional adjustable swivel produces a high light output with minimal glare as a result of its regressed light source. Ideal for sloped ceilings, wall washing, highlighting artwork, task or general lighting. 360° rotation and 30° tilt angle.

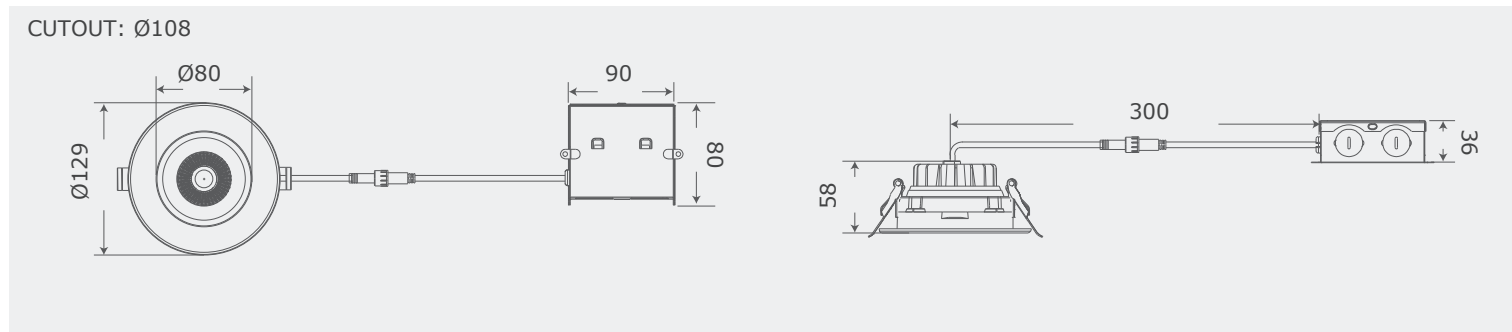


IP65 IESNA LM-80 IESNA LM-79 5 YEARS LIMITED WARRANTY INCLUDED

## Product Specifications

Model	GP-RG40-R-CCT	GP-RG40-R-WD
Lumen Output	950 lm	950 lm
Power Consumption (W)	12 W	12 W
Input Voltage	120-277V AC	120-277V AC
Colour Temperature (CCT)	2700K, 3000K, 3500K, 4000K, 5000K	Warm Dimming
CRI	Ra 90	Ra 90
Dimensions (mm)	Ø129 x 58 mm	Ø129 x 58 mm
Beam Angle	38°	38°
IP Rating	IP65	IP65

## Technical Drawing



## Order Form

GP	RG40	3	4	5	6	7	8	9
Series	Model							
<b>3. SIZE</b>	<b>4. WATTAGE</b>	<b>5. VOLTAGE</b>	<b>6. CCT</b>	<b>7. DIMMING</b>	<b>8. HOUSING</b>	<b>9. CRI</b>		
R 4" Round	12 12 W	A 120-277V AC	CCT Colour Adjustable (2700K, 3000K, 3500K, 4000K, 5000K) WD Warm Dimming	DL DALI DM 0-10V TR TRIAC	W White B Black	90 Ra90		

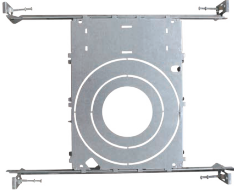
TYPE:

PROJECT:

CATALOG#:

LED Regressed Gimbal Recessed Downlight

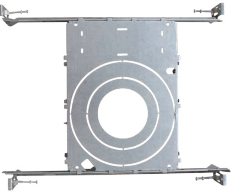
## New Construction Mounting Plate



### MP-UNV-23354

The MP-UNV-23354 is a 2<sup>3</sup>/<sub>8</sub>"/3<sup>5</sup>/<sub>8</sub>" new construction pre-mounting plate with hanger bars,

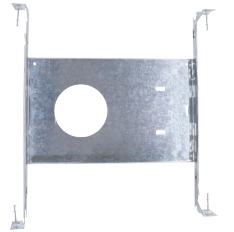
opening Ø2-1/8"(54mm), Ø2-7/8"(72mm), Ø3-3/4"(95mm), Ø5-1/4"(132mm)



### MP-UNV-346

The MP-UNV-346 is a 3<sup>1</sup>/<sub>4</sub>"/6" new construction pre-mounting plate with hanger bars,

opening Ø3"(75mm), Ø4-3/8"(110mm), Ø6-1/4"(160mm)



### MP-95

The MP-95 is a 3 3/4" new construction pre-mounting plate with hanger bars,

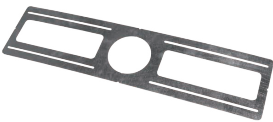
opening Ø3 3/4"(95mm).



### MP4

The MP4 new construction pre-mounting plate

opening Ø4-1/4"(108mm)



### MP4-1



The MP4-1 new construction pre-mounting plate

opening Ø4-1/4"(108mm)

## Product Features

This RECESSED GIMBAL with multi-directional adjustable swivel produces a high light output with minimal glare as a result of its regressed light source. Ideal for sloped ceilings, wall washing, highlighting artwork, task or general lighting. 360° rotation and 30° tilt angle.



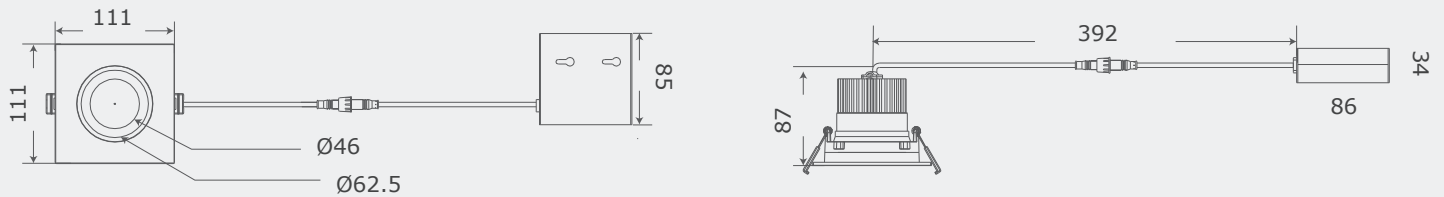
IP65 IESNA LM-80 IESNA LM-79   5 YEARS LIMITED WARRANTY INCLUDED

## Product Specifications

Model	GP-RG35-S-CCT
Lumen Output	950 lm
Power Consumption (W)	12 W
Input Voltage	120-277V AC
Colour Temperature (CCT)	2700K, 3000K, 3500K, 4000K, 5000K
CRI	Ra 90
Dimensions (mm)	111 x 111 x 87 mm
Beam Angle	38°
IP Rating	IP65

## Technical Drawing

CUTOUT: Ø90



## Order Form

GP	RG35	3	4	5	6	7	8	9
Series	Model							
<b>3. SIZE</b>	<b>4. WATTAGE</b>	<b>5. VOLTAGE</b>	<b>6. CCT</b>	<b>7. DIMMING</b>	<b>8. HOUSING</b>	<b>9. CRI</b>		
S 3.5" Square	12 12 W	A 120-277V AC	CCT Colour Adjustable (2700K, 3000K, 3500K, 4000K, 5000K)	DL DALI DM 0-10V TR TRIAC	W White B Black	90 Ra90		

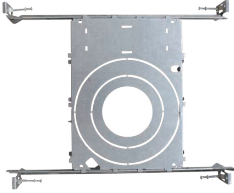
TYPE:

PROJECT:

CATALOG#:

LED Regressed Gimbal Recessed Downlight

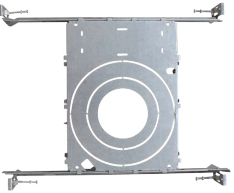
## New Construction Mounting Plate



### MP-UNV-23354

The MP-UNV-23354 is a 2<sup>3</sup>/<sub>8</sub>"/3<sup>5</sup>/<sub>8</sub>" new construction pre-mounting plate with hanger bars,

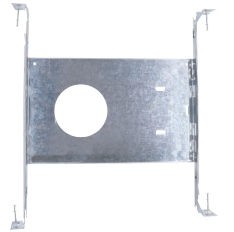
opening Ø2-1/8"(54mm), Ø2-7/8"(72mm), Ø3-3/4"(95mm), Ø5-1/4"(132mm)



### MP-UNV-346

The MP-UNV-346 is a 3<sup>1</sup>/<sub>4</sub>"/6" new construction pre-mounting plate with hanger bars,

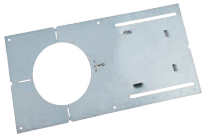
opening Ø3"(75mm), Ø4-3/8"(110mm), Ø6-1/4"(160mm)



### MP-95

The MP-95 is a 3 3/4" new construction pre-mounting plate with hanger bars,

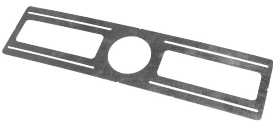
opening Ø3 3/4"(95mm).



### MP4

The MP4 new construction pre-mounting plate

opening Ø4-1/4"(108mm)



### MP4-1

The MP4-1 new construction pre-mounting plate

opening Ø4-1/4"(108mm)

## Product Features

This RECESSED GIMBAL with multi-directional adjustable swivel produces a high light output with minimal glare as a result of its regressed light source. Ideal for sloped ceilings, wall washing, highlighting artwork, task or general lighting. 360° rotation and 30° tilt angle.

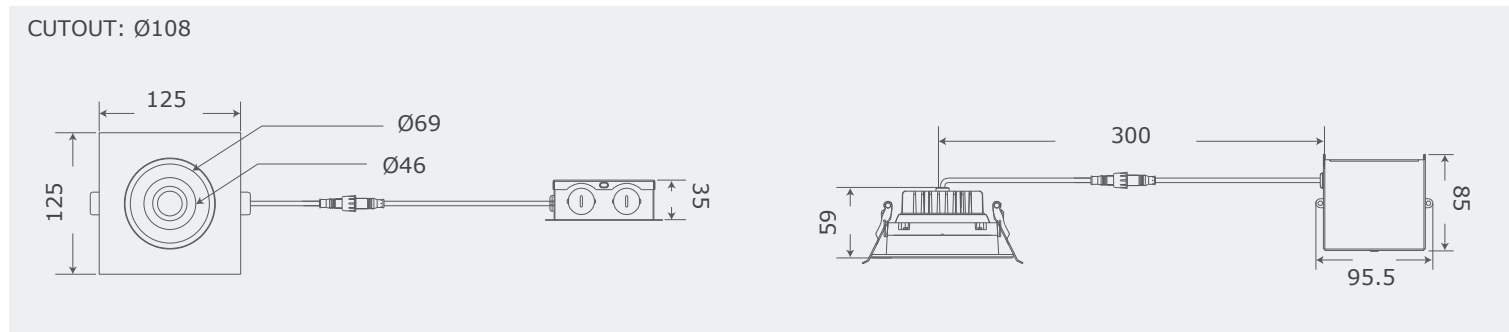


IP65 IESNA LM-80 IESNA LM-79 Intertek ENERGY STAR 5 YEARS LIMITED WARRANTY INCLUDED

## Product Specifications

Model	GP-RG40-S-CCT
Lumen Output	950 lm
Power Consumption (W)	12 W
Input Voltage	120-277V AC
Colour Temperature (CCT)	2700K, 3000K, 3500K, 4000K, 5000K
CRI	Ra 90
Dimensions (mm)	125 x 125 x 59 mm
Beam Angle	38°
IP Rating	IP65

## Technical Drawing



## Order Form

GP	RG40	3	4	5	6	7	8	9
Series	Model							
<b>3. SIZE</b>	<b>4. WATTAGE</b>	<b>5. VOLTAGE</b>	<b>6. CCT</b>	<b>7. DIMMING</b>	<b>8. HOUSING</b>	<b>9. CRI</b>		
S 4" Square	12 12 W	A 120-277V AC	CCT Colour Adjustable (2700K, 3000K, 3500K, 4000K, 5000K)	DL DALI DM 0-10V TR TRIAC	W White B Black	90 Ra90		

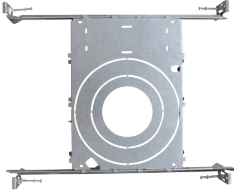
TYPE:

PROJECT:

CATALOG#:

LED Regressed Gimbal Recessed Downlight

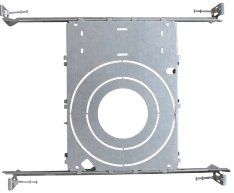
## New Construction Mounting Plate



### MP-UNV-23354

The MP-UNV-23354 is a 2<sup>3</sup>/<sub>8</sub>"/3<sup>5</sup>/<sub>8</sub>" new construction pre-mounting plate with hanger bars,

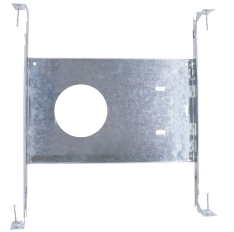
opening Ø2-1/8"(54mm), Ø2-7/8"(72mm), Ø3-3/4"(95mm), Ø5-1/4"(132mm)



### MP-UNV-346

The MP-UNV-346 is a 3<sup>1</sup>/<sub>4</sub>"/6" new construction pre-mounting plate with hanger bars,

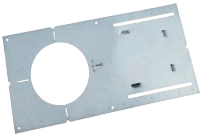
opening Ø3"(75mm), Ø4-3/8"(110mm), Ø6-1/4"(160mm)



### MP-95

The MP-95 is a 3 3/4" new construction pre-mounting plate with hanger bars,

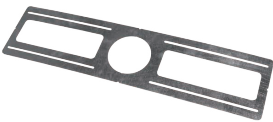
opening Ø3 3/4"(95mm).



### MP4

The MP4 new construction pre-mounting plate

opening Ø4-1/4"(108mm)



### MP4-1

The MP4-1 new construction pre-mounting plate

opening Ø4-1/4"(108mm)