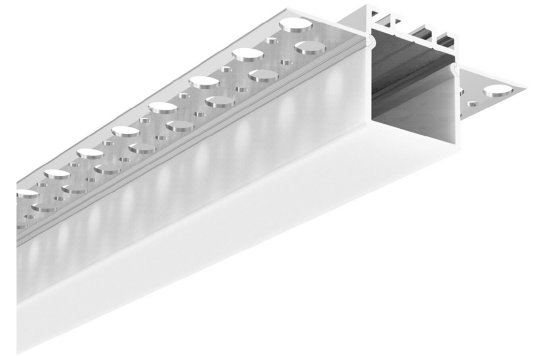


TYPE:

PROJECT:

CATALOG#:



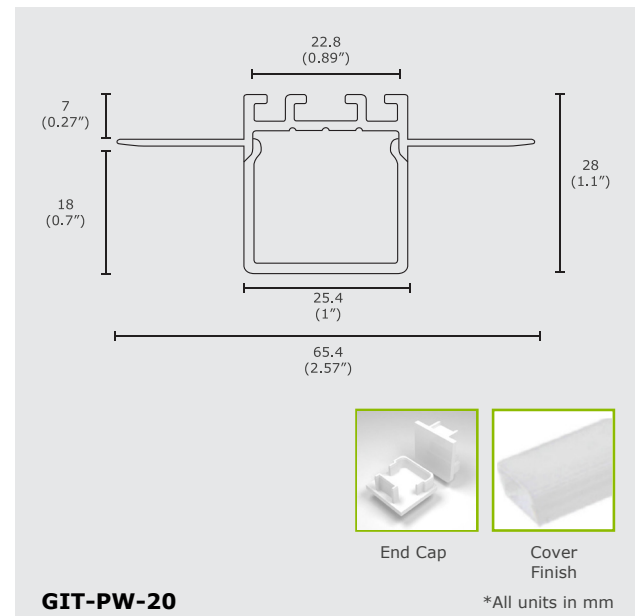
Product Features

GIT-PW-20 is a dry wall profile that comes with end caps to attach onto the ends of the profile. It is designed to be recessed mount and comes with PC or PMMA cover options.

Product Specifications

Model	GIT-PW-20
Length	2500 mm
Dimensions (mm)	65.4 x 28 mm
Material	Aluminum
Max LED Strip	22.8 mm
Cover Options	PC or PMMA
Colour Options	Silver

Technical Drawing



5 YEARS
LIMITED WARRANTY
INCLUDED

Order Form

PW	-	-	-	-	-	-
Series	2	3	4	5		
2. MODEL	3. LENGTH	4. COVER OPTIONS		5. HOUSING		
20 20	2500 2500 (2.5m)	PC	PC PM	PMMA	SV	Silver